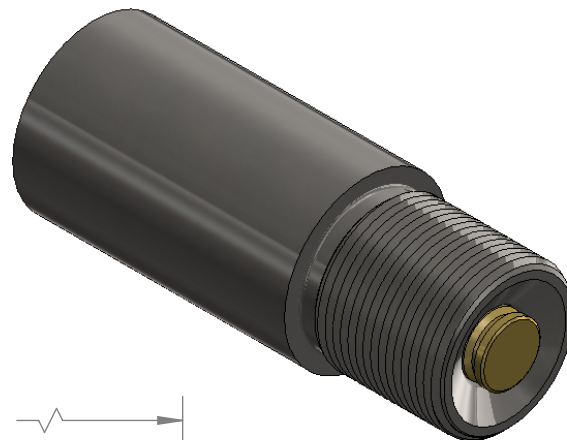


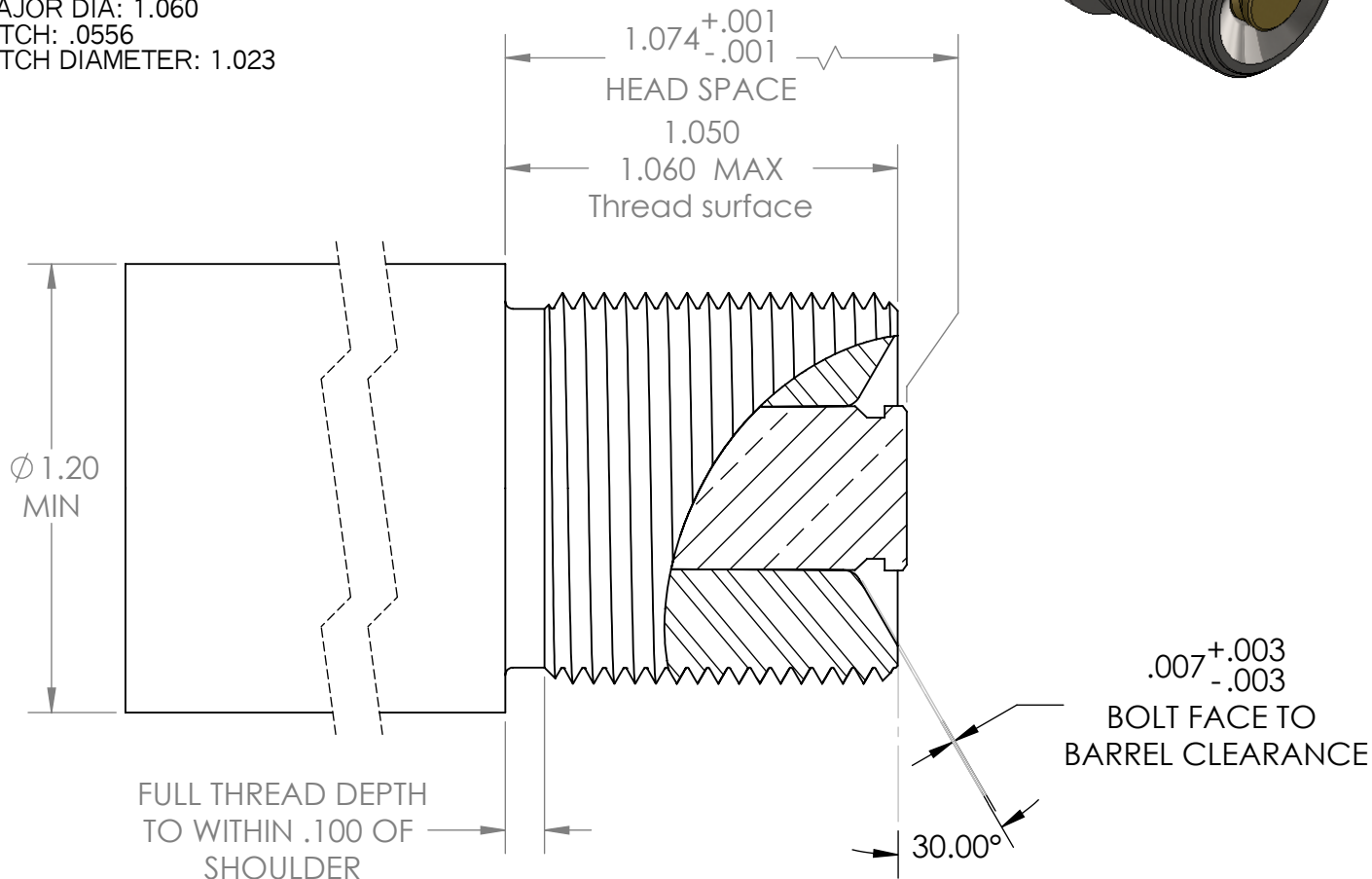
THIS DRAWING APPLIES ONLY TO THE FOLLOWING ACTION MODEL.

NEUVO




NOTES:

THREAD SIZE: 1-1/16 X 18
 THREAD PROFILE: 60° V
 TPI: 18
 MAJOR DIA: 1.060
 PITCH: .0556
 PITCH DIAMETER: 1.023



WARNING:

1. This print is for use with Neuvo actions only!
2. There may be some bastard actions due to customer rework. These may utilize oversize 1-1/16 threads. It is your responsibility to verify the thread size in the action you are chambering for.
3. Length of thread extension & size of cone will vary depending on the size of the bolt face and must be individually fit.
4. BAT Machine Inc. builds custom actions that may or may not match this drawing, and does not accept any liability from the use or misuse of this information. ALL actions should be measured individually.
5. The end user is soley responsible for the safe use of the product.

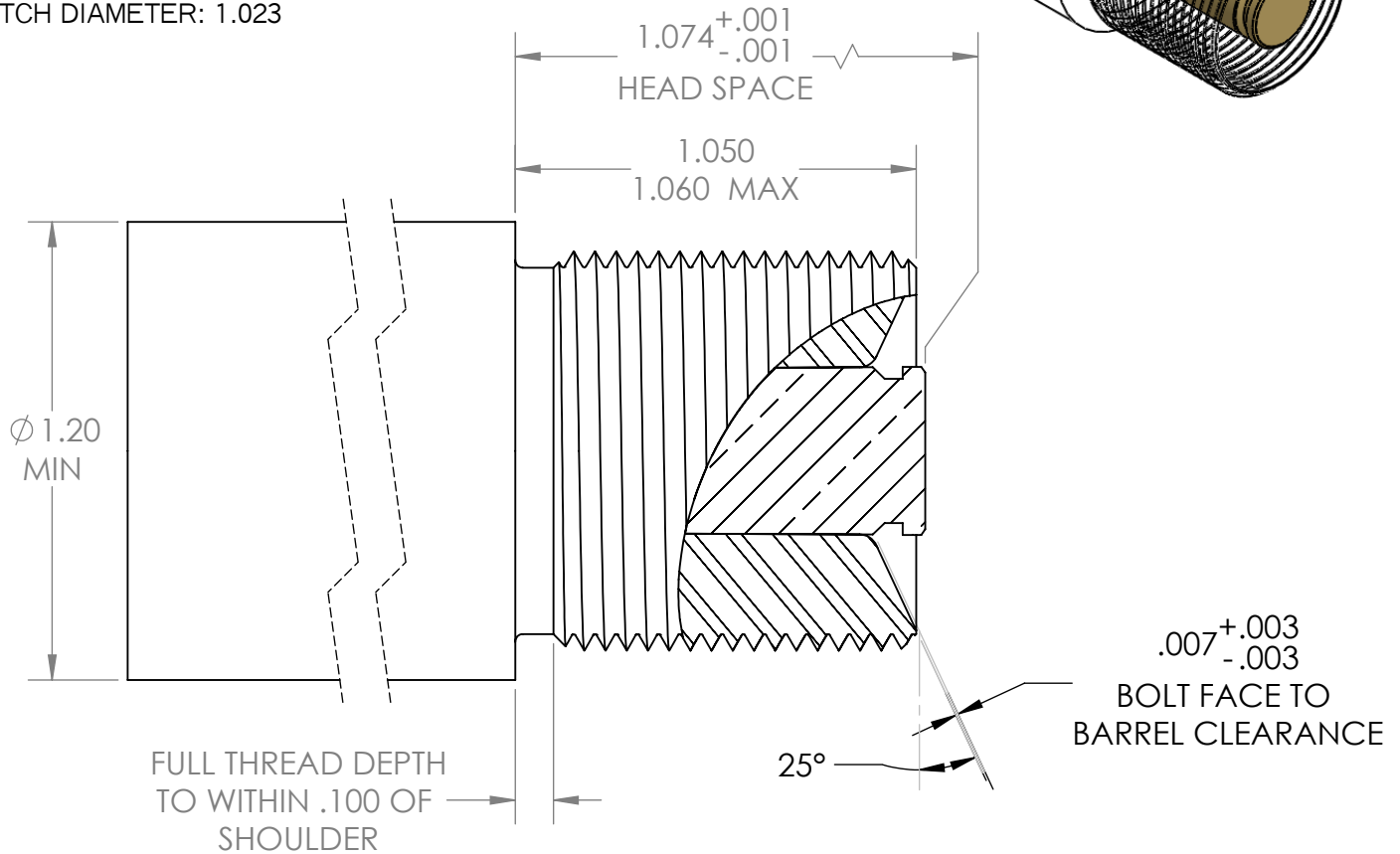
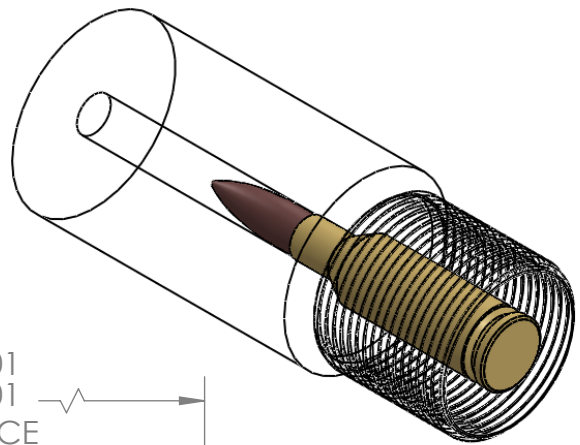
<p>PROPRIETARY AND CONFIDENTIAL THE INFORMATION CONTAINED IN THIS DRAWING IS THE SOLE PROPERTY OF BAT MACHINE CO. INC. ANY REPRODUCTION IN PART OR AS A WHOLE WITHOUT THE WRITTEN PERMISSION OF BAT MACHINE CO. INC. IS PROHIBITED.</p> 	<p>DIMENSIONS ARE IN INCHES TOLERANCES UNLESS OTHERWISE SPECIFIED: ANGULAR: ± 1 DEGREE TWO PLACE DECIMAL ± .005 THREE PLACE DECIMAL ± .001</p> <p>MATERIAL</p> <p>FINISH</p> <p>DO NOT SCALE DRAWING</p>	<p>NAME: D. Thom</p> <p>DATE: 2/17/2016</p>	<p><i>BAT Machine Co. Inc.</i></p> <p>1-1/16 X 18 NEUVO ONLY</p>
		<p>DRAWN</p> <p>CHECKED</p> <p>ENG APPR.</p> <p>MFG APPR.</p> <p>Q.A.</p> <p>COMMENTS:</p>	

THIS DRAWING APPLIES ONLY TO THE FOLLOWING ACTION MODELS.

S, SV, B, DS, 3L, 3LL

NOTES:

THREAD SIZE: 1-1/16 X 18
 THREAD PROFILE: 60° V
 TPI: 18
 MAJOR DIA: 1.060
 PITCH: .0556
 PITCH DIAMETER: 1.023



WARNING:

1. There have been some bastard actions due to customer request or rework. These utilize a 1-1/8 thread or oversize 1-1/16. It is your responsibility to verify the thread size in the action you are chambering for.
2. Length of thread extension & size of cone will vary depending on the size of the bolt face and must be individually fit.
3. BAT Machine Inc. builds custom actions that may or may not match this drawing, and does not accept any liability from the use or misuse of this information. ALL actions should be measured individually.
4. The end user is solely responsible for the safe use of the product.

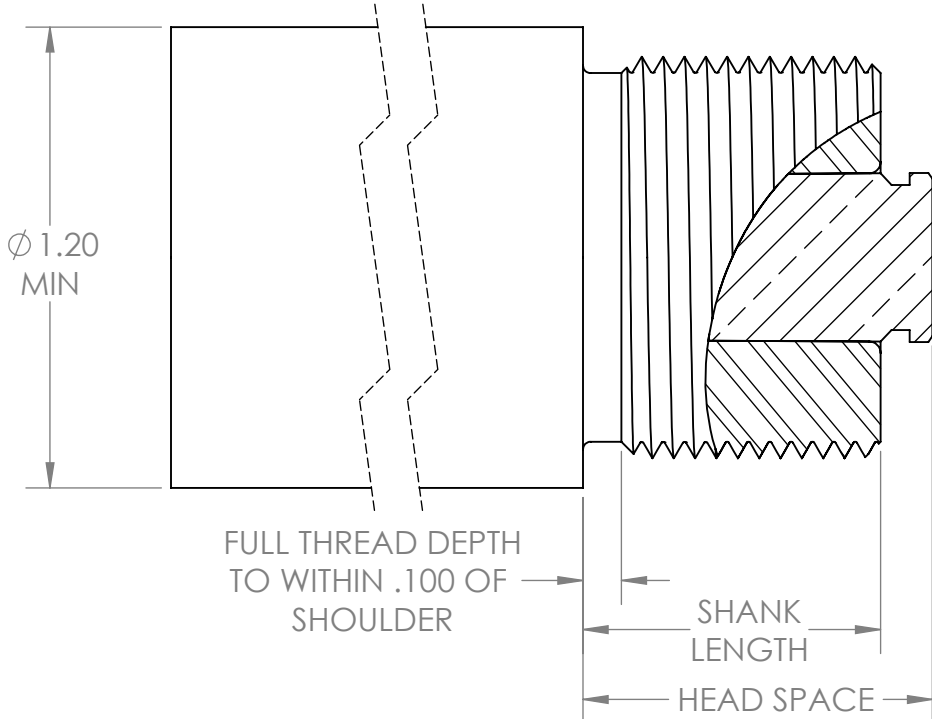
<p>PROPRIETARY AND CONFIDENTIAL</p> <p>THE INFORMATION CONTAINED IN THIS DRAWING IS THE SOLE PROPERTY OF BAT MACHINE CO. INC. ANY REPRODUCTION IN PART OR AS A WHOLE WITHOUT THE WRITTEN PERMISSION OF BAT MACHINE CO. INC. IS PROHIBITED.</p>	<p>DIMENSIONS ARE IN INCHES TOLERANCES UNLESS OTHERWISE SPECIFIED:</p> <p>ANGULAR: ± 1 DEGREE TWO PLACE DECIMAL ± .005 THREE PLACE DECIMAL ± .001</p>	NAME	DATE	<p><i>BAT Machine Co. Inc.</i></p> <p>1-1/16 X 18</p> <p>BR</p>	
		DRAWN	D. Thom		12/5/2013
	<p>MATERIAL</p> <p>FINISH</p> <p>DO NOT SCALE DRAWING</p>	CHECKED	B. Thom	12/5/2013	
		ENG APPR.			
		MFG APPR.			
		Q.A.			
		COMMENTS:			<p>SIZE A DWG. NO. tenon-1062 REV. A</p> <p>SCALE:2:1 WEIGHT: SHEET 1 OF 1</p>

REVISIONS				
ZONE	REV.	DESCRIPTION	DATE	APPROVED

THIS DRAWING APPLIES TO THE FOLLOWING ACTION MODELS

Bumblebee, Vampire & Igniter


SERIAL NUMBER	ALL
HEAD SPACE	.908 +/- .001
SHANK LENGTH	.772 +/- .003



NOTES:
 THREAD SIZE: 1-1/16 X 18
 THREAD PROFILE: 60° V
 TPI: 18
 MAJOR DIA: 1.060
 PITCH: .0556
 PITCH DIAMETER: 1.023

WARNING:

- BAT Machine Inc. builds custom actions that may or may not match this drawing and does not accept any liability from the use or misuse of this information. ALL actions should be measured individually.
- The end user is solely responsible for the safe use of the product.

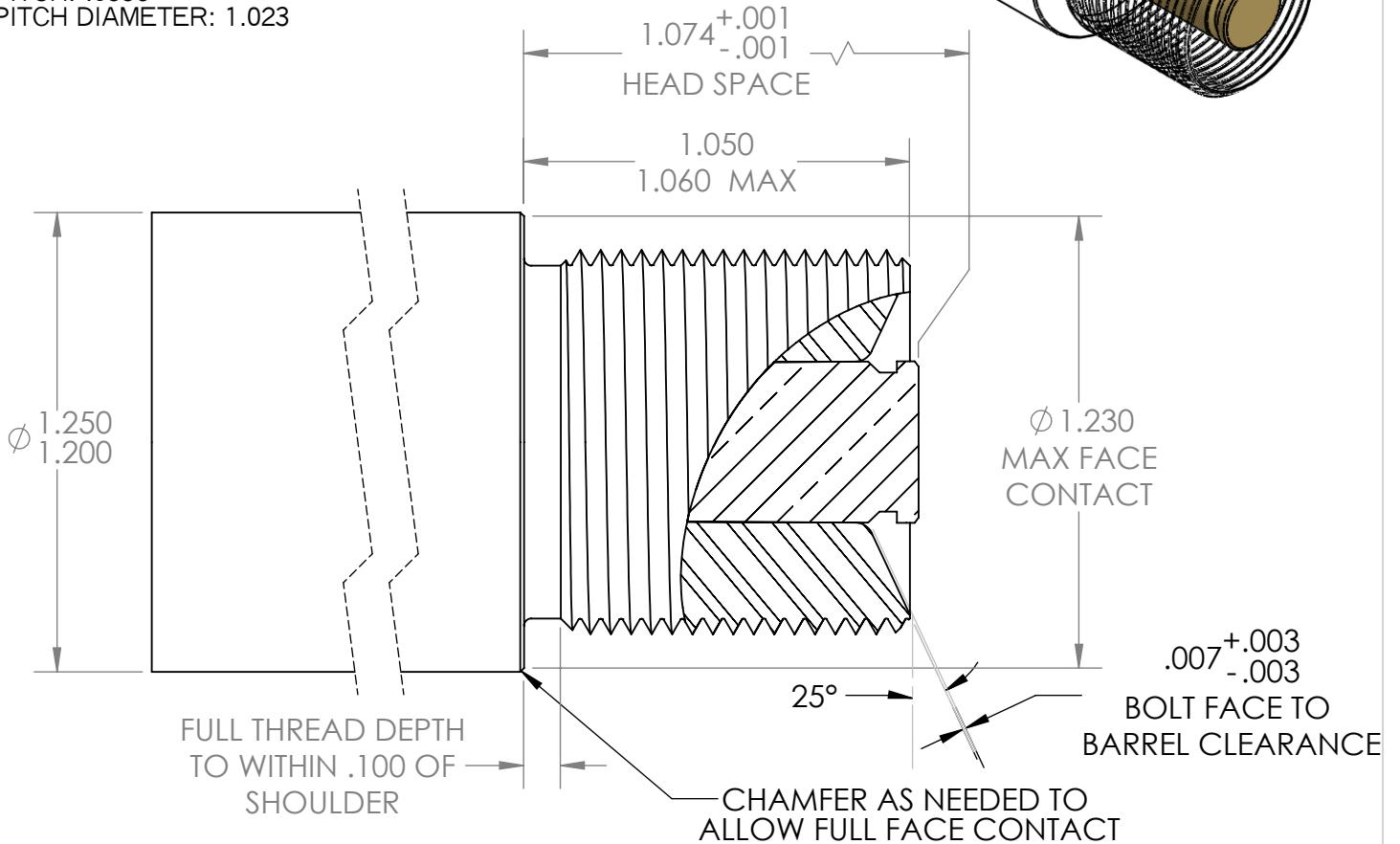
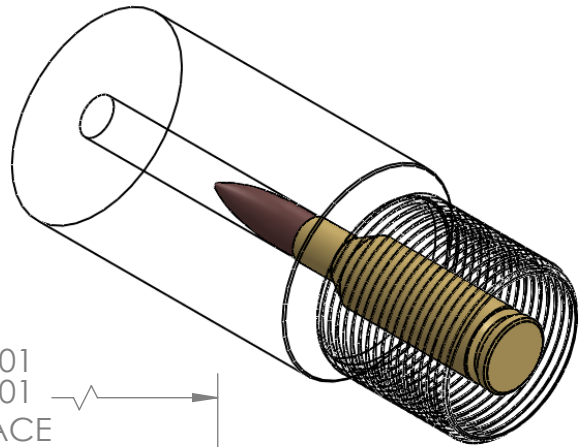
PROPRIETARY AND CONFIDENTIAL THE INFORMATION CONTAINED IN THIS DRAWING IS THE SOLE PROPERTY OF BAT MACHINE CO. INC. ANY REPRODUCTION IN PART OR AS A WHOLE WITHOUT THE WRITTEN PERMISSION OF BAT MACHINE CO. INC. IS PROHIBITED.	DIMENSIONS ARE IN INCHES TOLERANCES UNLESS OTHERWISE SPECIFIED: ANGULAR: ± 1 DEGREE TWO PLACE DECIMAL ± .005 THREE PLACE DECIMAL ± .001	NAME	DATE	BAT Machine Co. Inc. 1-1/16 X 18 BB/VP/IG
		DRAWN	D. Thom	
	MATERIAL FINISH DO NOT SCALE DRAWING	CHECKED		SIZE DWG. NO. REV. A tenon-1062BBVPIG A
		ENG APPR.		
		MFG APPR.		
		Q.A.		
		COMMENTS:		SCALE:2:1 WEIGHT: SHEET 1 OF 1

THIS DRAWING APPLIES ONLY TO THE FOLLOWING ACTION MODELS.

SB & MB


NOTES:

THREAD SIZE: 1-1/16 X 18
 THREAD PROFILE: 60° V
 TPI: 18
 MAJOR DIA: 1.060
 PITCH: .0556
 PITCH DIAMETER: 1.023



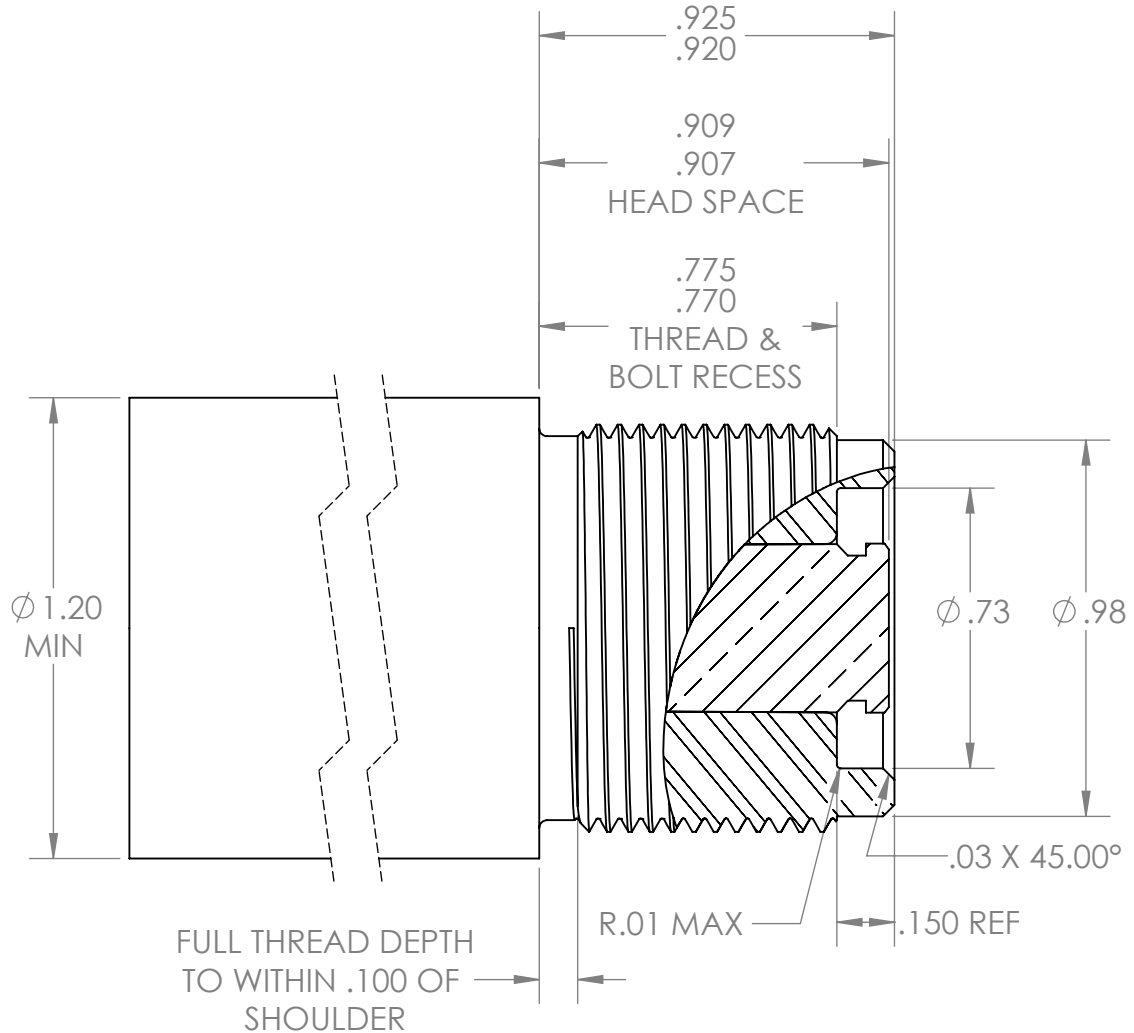
WARNING:

1. There have been some bastard actions due to customer request or rework. These utilize a 1-1/8 thread or oversize 1-1/16. It is your responsibility to verify the thread size in the action you are chambering for.
2. Length of thread extension & size of cone will vary depending on the size of the bolt face and must be individually fit.
3. BAT Machine Inc. builds custom actions that may or may not match this drawing, and does not accept any liability from the use or misuse of this information. ALL actions should be measured individually.
4. The end user is solely responsible for the safe use of the product.

<p>PROPRIETARY AND CONFIDENTIAL</p> <p>THE INFORMATION CONTAINED IN THIS DRAWING IS THE SOLE PROPERTY OF BAT MACHINE CO. INC. ANY REPRODUCTION IN PART OR AS A WHOLE WITHOUT THE WRITTEN PERMISSION OF BAT MACHINE CO. INC. IS PROHIBITED.</p>	<p>DIMENSIONS ARE IN INCHES TOLERANCES UNLESS OTHERWISE SPECIFIED:</p> <p>ANGULAR: ± 1 DEGREE TWO PLACE DECIMAL ± .005 THREE PLACE DECIMAL ± .001</p>	NAME	DATE	<p><i>BAT Machine Co. Inc.</i></p> <p>1-1/16 X 18 SLEEVE</p>
		DRAWN	D. Thom	
	<p>MATERIAL</p> <p>FINISH</p> <p>DO NOT SCALE DRAWING</p>	CHECKED	B. Thom	12/5/2013
		ENG APPR.		
		MFG APPR.		
		Q.A.		
		COMMENTS:		
		SIZE	DWG. NO.	REV.
		A	tenon-1062SBMB	A
		SCALE:2:1	WEIGHT:	SHEET 1 OF 1

**THIS DRAWING APPLIES ONLY TO
ACTION MODEL
TR
WITH SERIAL NUMBERS OF
100 AND ABOVE**

NOTES:
 THREAD SIZE: 1-1/16 X 18
 THREAD PROFILE: 60° V
 TPI: 18
 MAJOR DIA: 1.060
 PITCH: .0556
 PITCH DIAMETER: 1.023



WARNING:

1. BAT Machine Inc. builds custom actions that may or may not match this drawing, and does not accept any liability from the use or misuse of this information. ALL actions should be measured individually.
2. The end user is solely responsible for the safe use of the product.

<p>PROPRIETARY AND CONFIDENTIAL THE INFORMATION CONTAINED IN THIS DRAWING IS THE SOLE PROPERTY OF BAT MACHINE CO. INC. ANY REPRODUCTION IN PART OR AS A WHOLE WITHOUT THE WRITTEN PERMISSION OF BAT MACHINE CO. INC. IS PROHIBITED.</p>	<p>DIMENSIONS ARE IN INCHES TOLERANCES UNLESS OTHERWISE SPECIFIED: ANGULAR: ± 1 DEGREE TWO PLACE DECIMAL ±.005 THREE PLACE DECIMAL ±.001</p>	NAME	DATE	<p><i>BAT Machine Co. Inc.</i></p> <p>1-1/16 X 18 TR 100+</p>
		DRAWN	D. Thom	
	<p>MATERIAL</p> <p>FINISH</p> <p>DO NOT SCALE DRAWING</p>	CHECKED	B. Thom	3-7-2018
		ENG APPR.		
		MFG APPR.		
		Q.A.		
		COMMENTS:		
		SCALE: 2:1	DWG. NO. tenon-1062TR	REV. A
		WEIGHT:	SHEET 1 OF 1	

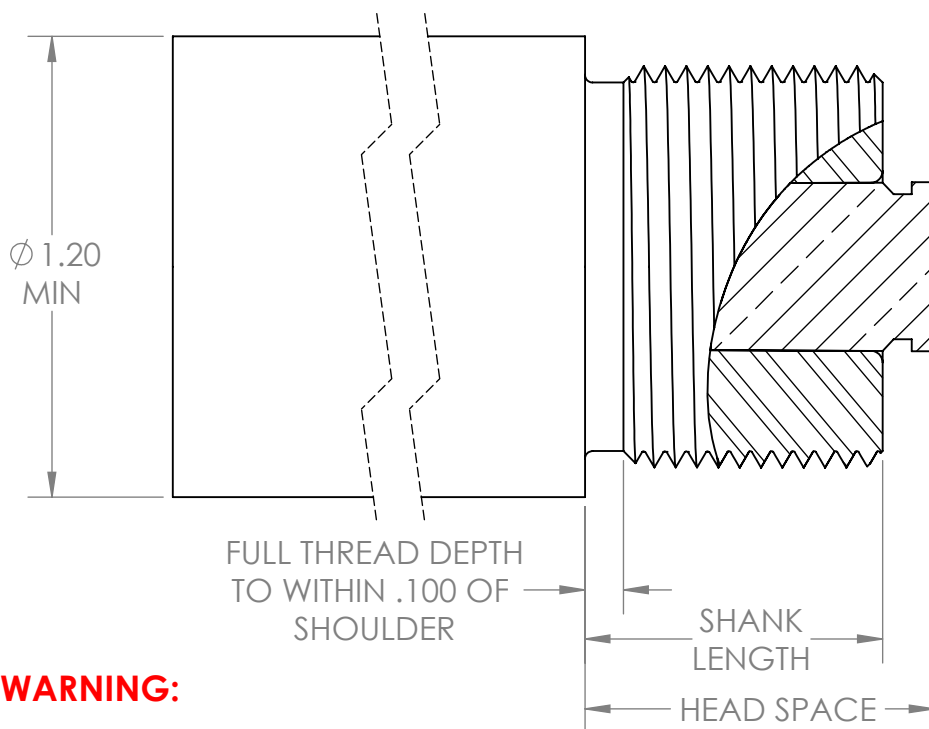
REVISIONS				
ZONE	REV.	DESCRIPTION	DATE	APPROVED
B1	A	ADDED MODEL TR WITH SERIAL NUMBER UNDER 100 AND CHANGED DIMENSIONS	3/8/2018	DTHOM

THIS DRAWING APPLIES ONLY TO THE FOLLOWING ACTION MODELS AND SERIAL NUMBER GROUPS.

VR, BTA & TR

Ⓐ

SERIAL NUMBER	VR01 TO VR999	BTA, VR1000+ & TR UNDER 100
HEAD SPACE	.829 +/- .001	.908 +/- .001
SHANK LENGTH	.696 +/- .004	.772 +/- .003



NOTES:

THREAD SIZE: 1-1/16 X 18
 THREAD PROFILE: 60° V
 TPI: 18
 MAJOR DIA: 1.060
 PITCH: .0556
 PITCH DIAMETER: 1.023

WARNING:

1. Length of thread shank will vary depending on the serial number of the action, see table above.
2. There have been some bastard actions due to customer request or rework. These utilize an oversize 1-1/16 thread. It is your responsibility to verify the thread size in the action you are chambering for.
3. BAT Machine Inc. builds custom actions that may or may not match this drawing, and does not accept any liability from the use or misuse of this information. ALL actions should be measured individually.
4. The end user is solely responsible for the safe use of the product.

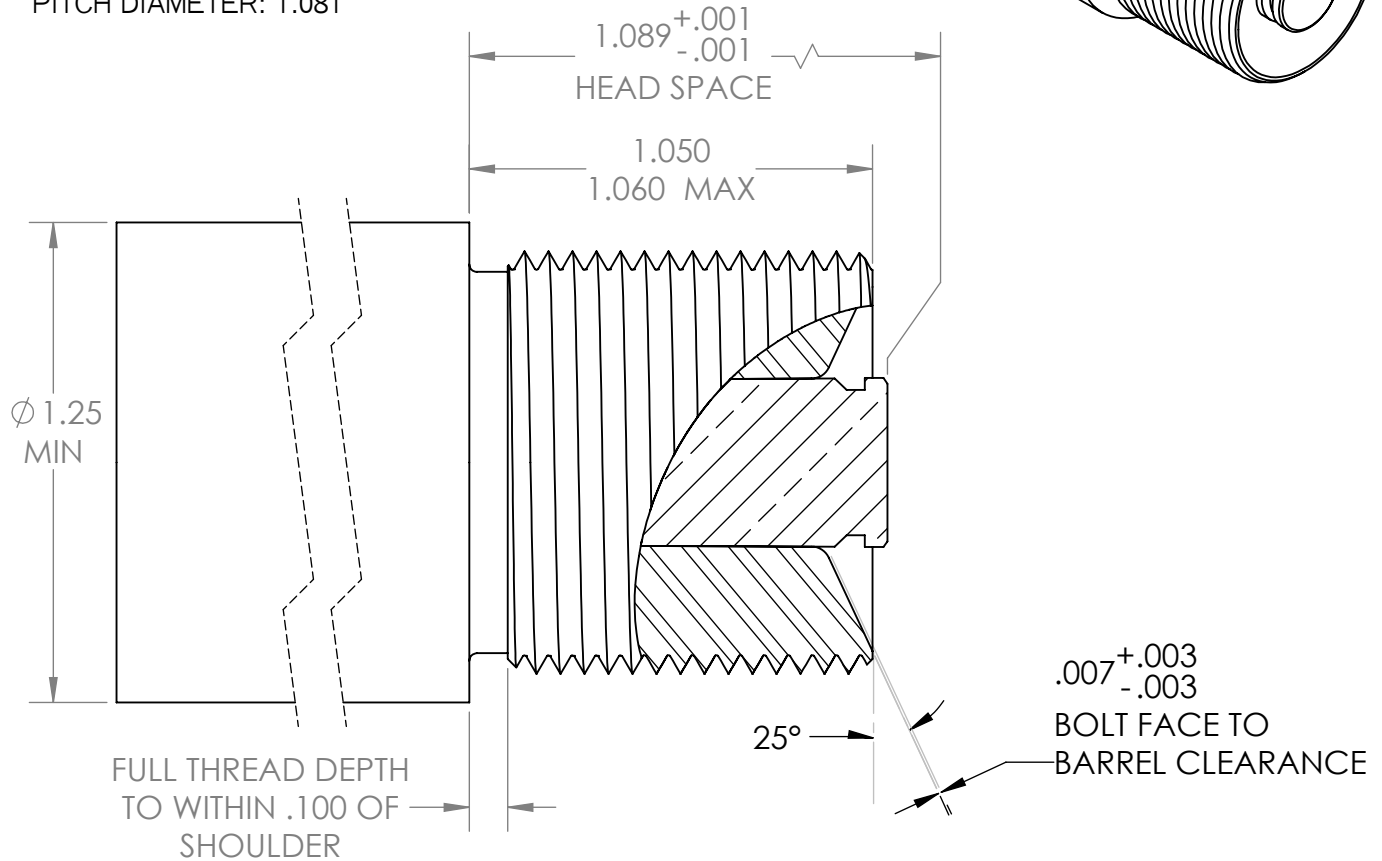
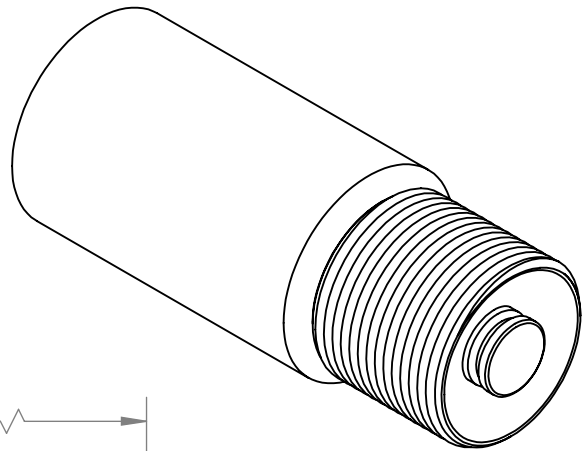
PROPRIETARY AND CONFIDENTIAL THE INFORMATION CONTAINED IN THIS DRAWING IS THE SOLE PROPERTY OF BAT MACHINE CO. INC. ANY REPRODUCTION IN PART OR AS A WHOLE WITHOUT THE WRITTEN PERMISSION OF BAT MACHINE CO. INC. IS PROHIBITED.	DIMENSIONS ARE IN INCHES TOLERANCES UNLESS OTHERWISE SPECIFIED: ANGULAR: ± 1 DEGREE TWO PLACE DECIMAL ± .005 THREE PLACE DECIMAL ± .001	NAME	DATE	<i>BAT Machine Co. Inc.</i> 1-1/16 X 18 VR
		DRAWN	D. Thom	
	MATERIAL FINISH DO NOT SCALE DRAWING	CHECKED	K. Bauer	12/27/2013
		ENG APPR.		
		MFG APPR.		
		Q.A.		
		COMMENTS:		
		SIZE	DWG. NO.	REV.
		A	tenon-1062VR	A
		SCALE: 2:1	WEIGHT:	SHEET 1 OF 1

THIS DRAWING APPLIES ONLY TO THE ACTION MODEL.

M



NOTES:

THREAD SIZE: 1-1/8 X 16
 THREAD PROFILE: 60° V
 TPI: 16
 MAJOR DIA: 1.121
 PITCH: .0625
 PITCH DIAMETER: 1.081



WARNING:

1. All of the model M actions with the 408 Chey-Tac bolt face have the larger 1-3/16 x 16 threads. There have been some bastard actions due to customer request or rework. It is your responsibility to verify the thread size in the action you are chambering for.
2. Length of thread extension & size of cone will vary depending on the size of the bolt face and must be individually fit.
3. BAT Machine Inc. builds custom actions that may or may not match this drawing, and does not accept any liability from the use or misuse of this information. ALL actions should be measured individually.
4. The end user is solely responsible for the safe use of the product.

<p>PROPRIETARY AND CONFIDENTIAL THE INFORMATION CONTAINED IN THIS DRAWING IS THE SOLE PROPERTY OF BAT MACHINE CO. INC. ANY REPRODUCTION IN PART OR AS A WHOLE WITHOUT THE WRITTEN PERMISSION OF BAT MACHINE CO. INC. IS PROHIBITED.</p>	<p>DIMENSIONS ARE IN INCHES TOLERANCES UNLESS OTHERWISE SPECIFIED: ANGULAR: ± 1 DEGREE TWO PLACE DECIMAL $\pm .005$ THREE PLACE DECIMAL $\pm .001$</p>	NAME	DATE	 1-1/8 X 16 BR
		DRAWN	D. Thom	
	MATERIAL FINISH DO NOT SCALE DRAWING	CHECKED	B. Thom	12/23/2013
		ENG APPR.		
		MFG APPR.		
		Q.A.		
		COMMENTS: 5-19-2014 CHANGED HEAD SPACE D. THOM		SIZE A DWG. NO. tenon-1125 REV. B
		SCALE: 2:1	WEIGHT:	SHEET 1 OF 1

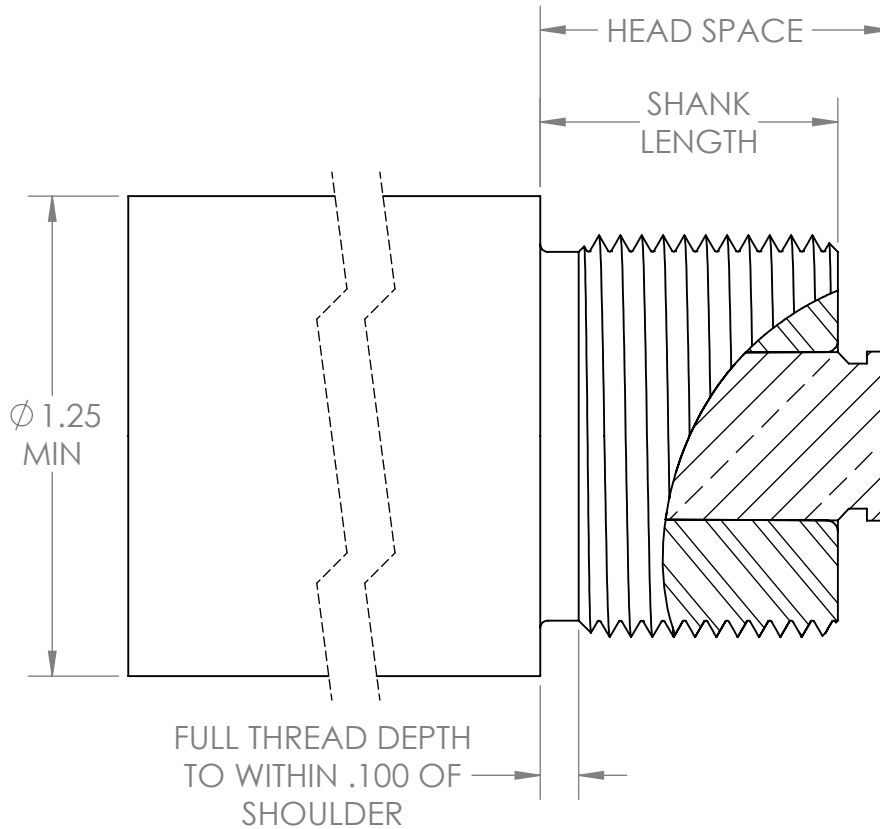
THIS DRAWING APPLIES ONLY TO THE FOLLOWING ACTION MODELS.

HR, BTLA, BTLE

NOTES:


THREAD SIZE: 1-1/8 X 16
 THREAD PROFILE: 60° V
 TPI: 16
 MAJOR DIA: 1.121
 PITCH: .0625
 PITCH DIAMETER: 1.081

SERIAL NUMBER	HR01 TO HR999	S/N HR1000+ & ALL S/N of BTLE/BELA
HEAD SPACE	.824 +/- .001	.904 +/- .001
SHANK LENGTH	.681 +/- .004	.758 +/- .003



WARNING:

1. Length of thread shank will vary depending on the serial number of the action, see table above.
2. There have been some bastard actions due to customer request or rework. These utilize an oversize 1-1/8 thread. It is your responsibility to verify the thread size in the action you are chambering for.
3. BAT Machine Inc. builds custom actions that may or may not match this drawing. and does not accept any liability from the use or misuse of this information. ALL actions should be measured individually.
4. The end user is solely responsible for the safe use of the product.

<p>PROPRIETARY AND CONFIDENTIAL THE INFORMATION CONTAINED IN THIS DRAWING IS THE SOLE PROPERTY OF BAT MACHINE CO. INC. ANY REPRODUCTION IN PART OR AS A WHOLE WITHOUT THE WRITTEN PERMISSION OF BAT MACHINE CO. INC. IS PROHIBITED.</p> 	<p>DIMENSIONS ARE IN INCHES TOLERANCES UNLESS OTHERWISE SPECIFIED: ANGULAR: ± 1 DEGREE TWO PLACE DECIMAL $\pm .005$ THREE PLACE DECIMAL $\pm .001$</p> <p>MATERIAL</p> <p>FINISH</p> <p>DO NOT SCALE DRAWING</p>	<p>NAME: D. Thom</p> <p>DATE: 12/5/2013</p>	<p><i>BAT Machine Co. Inc.</i></p> <p>1-1/8 X 16</p> <p>HR</p>
		<p>CHECKED: K. Bauer</p> <p>12/27/2013</p> <p>ENG APPR.</p> <p>MFG APPR.</p> <p>Q.A.</p> <p>COMMENTS:</p>	

THIS DRAWING APPLIES TO THE ACTION MODEL.

CT

NOTES:

SOME MODEL **M** ACTIONS WERE ALSO MADE WITH THIS THREAD

THREAD SIZE: 1-3/16 X 16

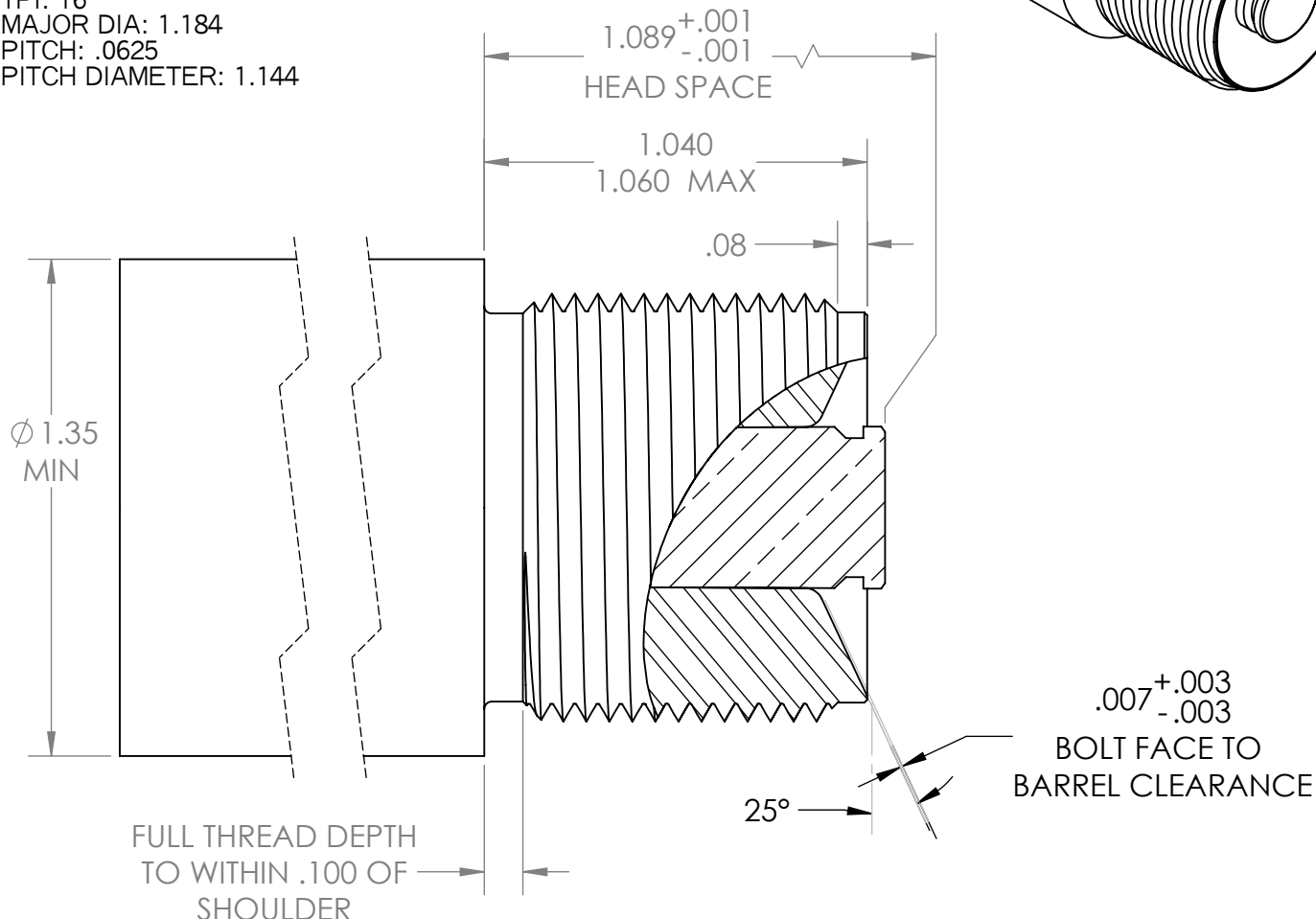
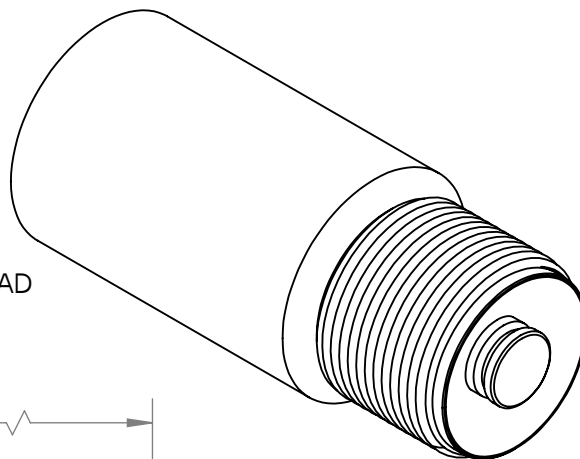
THREAD PROFILE: 60° V

TPI: 16

MAJOR DIA: 1.184



PITCH: .0625

PITCH DIAMETER: 1.144



WARNING:

1. There have been some bastard actions due to customer request or rework. It is your responsibility to verify the thread size in the action you are chambering for.
2. Length of thread extension & size of cone will vary depending on the size of the bolt face and must be individually fit.
3. BAT Machine Inc. builds custom actions that may or may not match this drawing. and does not accept any liability from the use or misuse of this information. ALL actions should be measured individually.
4. The end user is soley responsible for the safe use of the product.

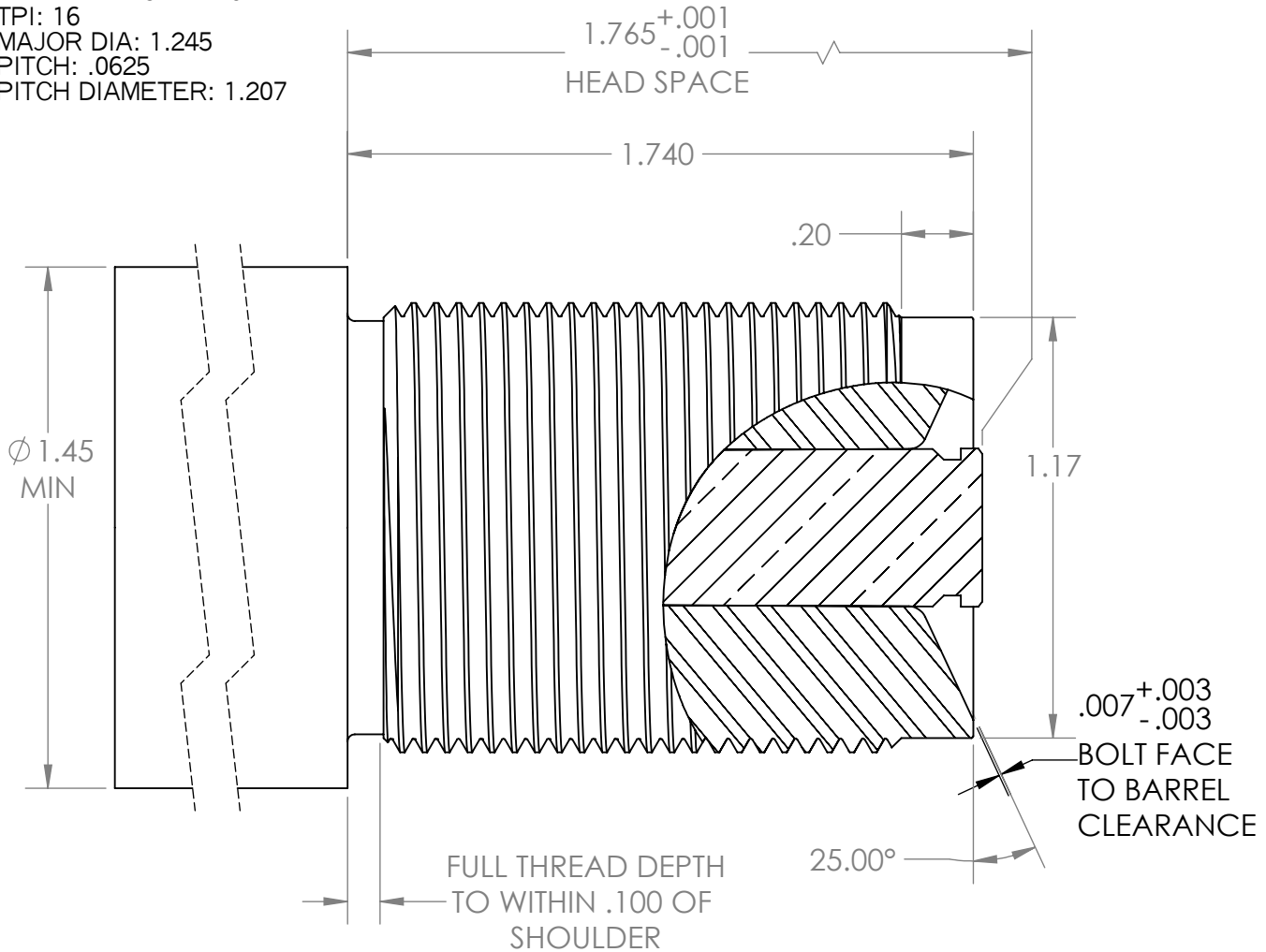
<p>PROPRIETARY AND CONFIDENTIAL THE INFORMATION CONTAINED IN THIS DRAWING IS THE SOLE PROPERTY OF BAT MACHINE CO. INC. ANY REPRODUCTION IN PART OR AS A WHOLE WITHOUT THE WRITTEN PERMISSION OF BAT MACHINE CO. INC. IS PROHIBITED.</p>	<p>DIMENSIONS ARE IN INCHES TOLERANCES UNLESS OTHERWISE SPECIFIED: ANGULAR: ± 1 DEGREE TWO PLACE DECIMAL ± .005 THREE PLACE DECIMAL ± .001</p>	NAME	DATE	 1-3/16 X 16 CT
		DRAWN	D. Thom	
	<p>MATERIAL</p> <p>FINISH</p> <p>DO NOT SCALE DRAWING</p>	CHECKED	B. Thom	12/23/2013
		ENG APPR.		
		MFG APPR.		
		Q.A.		
		COMMENTS:	5-19-2014 fixed head space dimension D. Thom	
		SIZE	DWG. NO.	REV.
		A	tenon-1187	B
		SCALE:2:1	WEIGHT:	SHEET 1 OF 1

THIS DRAWING APPLIES TO THE ACTION MODEL.

L

NOTES:

THREAD SIZE: 1-1/4 X 16
 THREAD PROFILE: 60° V
 TPI: 16
 MAJOR DIA: 1.245
 PITCH: .0625
 PITCH DIAMETER: 1.207



WARNING:

1. There have been some bastard actions due to customer request or rework. It is your responsibility to verify the thread size in the action you are chambering for.
2. Length of thread extension & size of cone will vary depending on the size of the bolt face and must be individually fit.
3. BAT Machine Inc. builds custom actions that may or may not match this drawing, and does not accept any liability from the use or misuse of this information. ALL actions should be measured individually.
4. The end user is soley responsible for the safe use of the product.

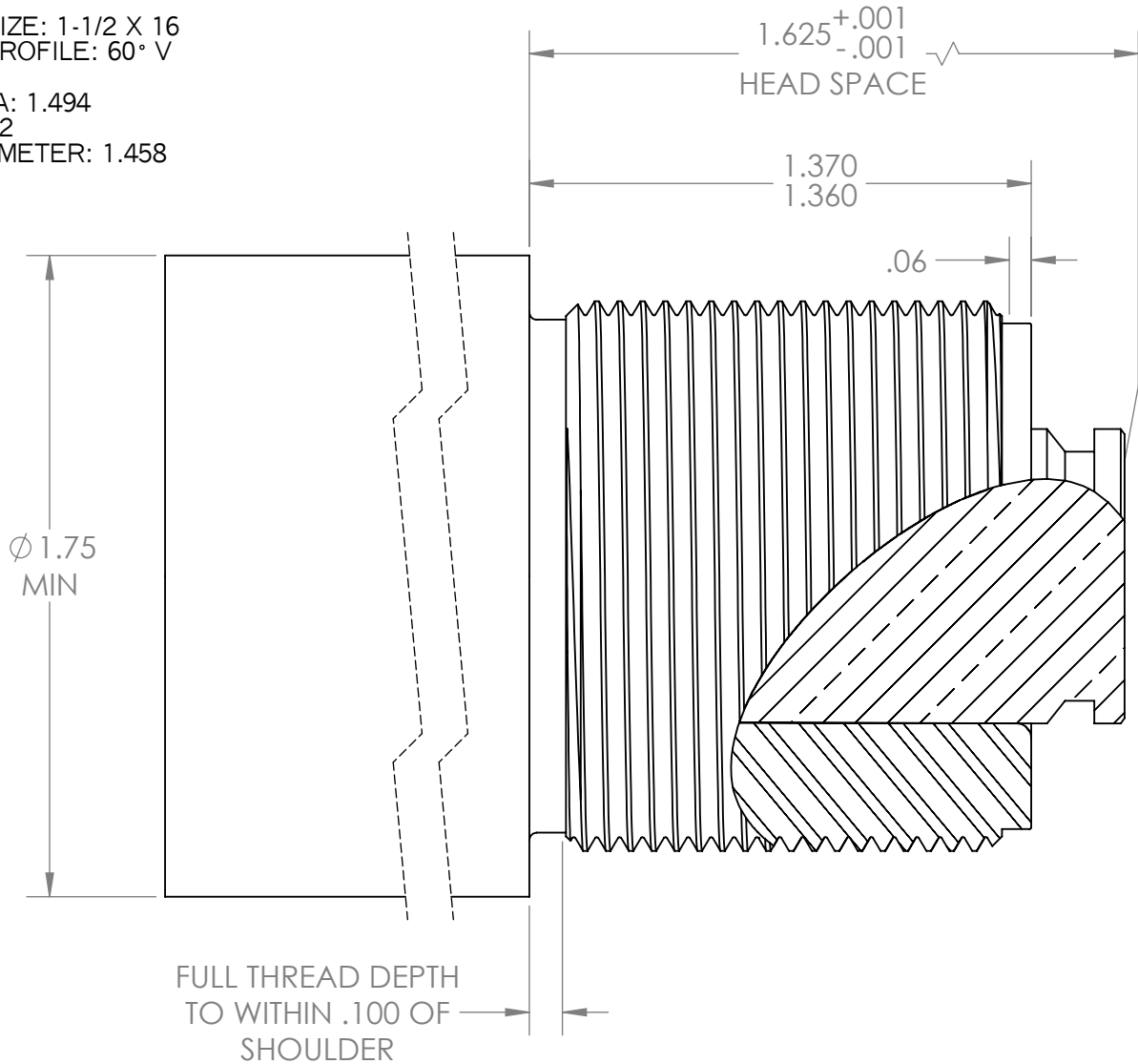
<p>PROPRIETARY AND CONFIDENTIAL</p> <p>THE INFORMATION CONTAINED IN THIS DRAWING IS THE SOLE PROPERTY OF BAT MACHINE CO. INC. ANY REPRODUCTION IN PART OR AS A WHOLE WITHOUT THE WRITTEN PERMISSION OF BAT MACHINE CO. INC. IS PROHIBITED.</p>	<p>DIMENSIONS ARE IN INCHES</p> <p>TOLERANCES UNLESS OTHERWISE SPECIFIED:</p> <p>ANGULAR: ± 1 DEGREE</p> <p>TWO PLACE DECIMAL ± .005</p> <p>THREE PLACE DECIMAL ± .001</p>	NAME	DATE	<p><i>BAT Machine Co. Inc.</i></p> <p>1-1/4 X 16</p> <p>L</p>
		DRAWN	D. Thom	
	<p>MATERIAL</p> <p>FINISH</p> <p>DO NOT SCALE DRAWING</p>	CHECKED	B. Thom	12/23/2013
		ENG APPR.		
		MFG APPR.		
		Q.A.		
		COMMENTS:		<p>SIZE A DWG. NO. tenon-1250 REV. A</p> <p>SCALE: 2:1 WEIGHT: SHEET 1 OF 1</p>

THIS DRAWING ONLY APPLIES TO THE ACTION MODEL.

EX with 50 BMG Bolt

NOTES:

THREAD SIZE: 1-1/2 X 16
 THREAD PROFILE: 60° V
 TPI: 16
 MAJOR DIA: 1.494
 PITCH: .062
 PITCH DIAMETER: 1.458



WARNING:

1. There have been some bastard actions due to customer request or rework. It is your responsibility to verify the thread size in the action you are chambering for.
2. BAT Machine Inc. builds custom actions that may or may not match this drawing, and does not accept any liability from the use or misuse of this information. ALL actions should be measured individually.
3. The end user is solely responsible for the safe use of the product.

<p>PROPRIETARY AND CONFIDENTIAL THE INFORMATION CONTAINED IN THIS DRAWING IS THE SOLE PROPERTY OF BAT MACHINE CO. INC. ANY REPRODUCTION IN PART OR AS A WHOLE WITHOUT THE WRITTEN PERMISSION OF BAT MACHINE CO. INC. IS PROHIBITED.</p>	<p>DIMENSIONS ARE IN INCHES TOLERANCES UNLESS OTHERWISE SPECIFIED: ANGULAR: ± 1 DEGREE TWO PLACE DECIMAL ± .005 THREE PLACE DECIMAL ± .001</p>	<table border="1"> <tr> <th>NAME</th> <th>DATE</th> </tr> <tr> <td>DRAWN D. Thom</td> <td>12/5/2013</td> </tr> <tr> <td>CHECKED B. Thom</td> <td>12/23/2013</td> </tr> <tr> <td>ENG APPR.</td> <td></td> </tr> <tr> <td>MFG APPR.</td> <td></td> </tr> <tr> <td>Q.A.</td> <td></td> </tr> <tr> <td colspan="2">COMMENTS:</td> </tr> </table>	NAME	DATE	DRAWN D. Thom	12/5/2013	CHECKED B. Thom	12/23/2013	ENG APPR.		MFG APPR.		Q.A.		COMMENTS:		<p><i>BAT Machine Co. Inc.</i></p> <p>1-1/2 X 16 EX BMG</p>
	NAME	DATE															
DRAWN D. Thom	12/5/2013																
CHECKED B. Thom	12/23/2013																
ENG APPR.																	
MFG APPR.																	
Q.A.																	
COMMENTS:																	
<p>MATERIAL</p> <p>FINISH</p> <p>DO NOT SCALE DRAWING</p>	<table border="1"> <tr> <td>SIZE A</td> <td>DWG. NO. tenon-1500</td> <td>REV. A</td> </tr> <tr> <td>SCALE: 2:1</td> <td>WEIGHT:</td> <td>SHEET 1 OF 1</td> </tr> </table>	SIZE A	DWG. NO. tenon-1500	REV. A	SCALE: 2:1	WEIGHT:	SHEET 1 OF 1										
SIZE A	DWG. NO. tenon-1500	REV. A															
SCALE: 2:1	WEIGHT:	SHEET 1 OF 1															

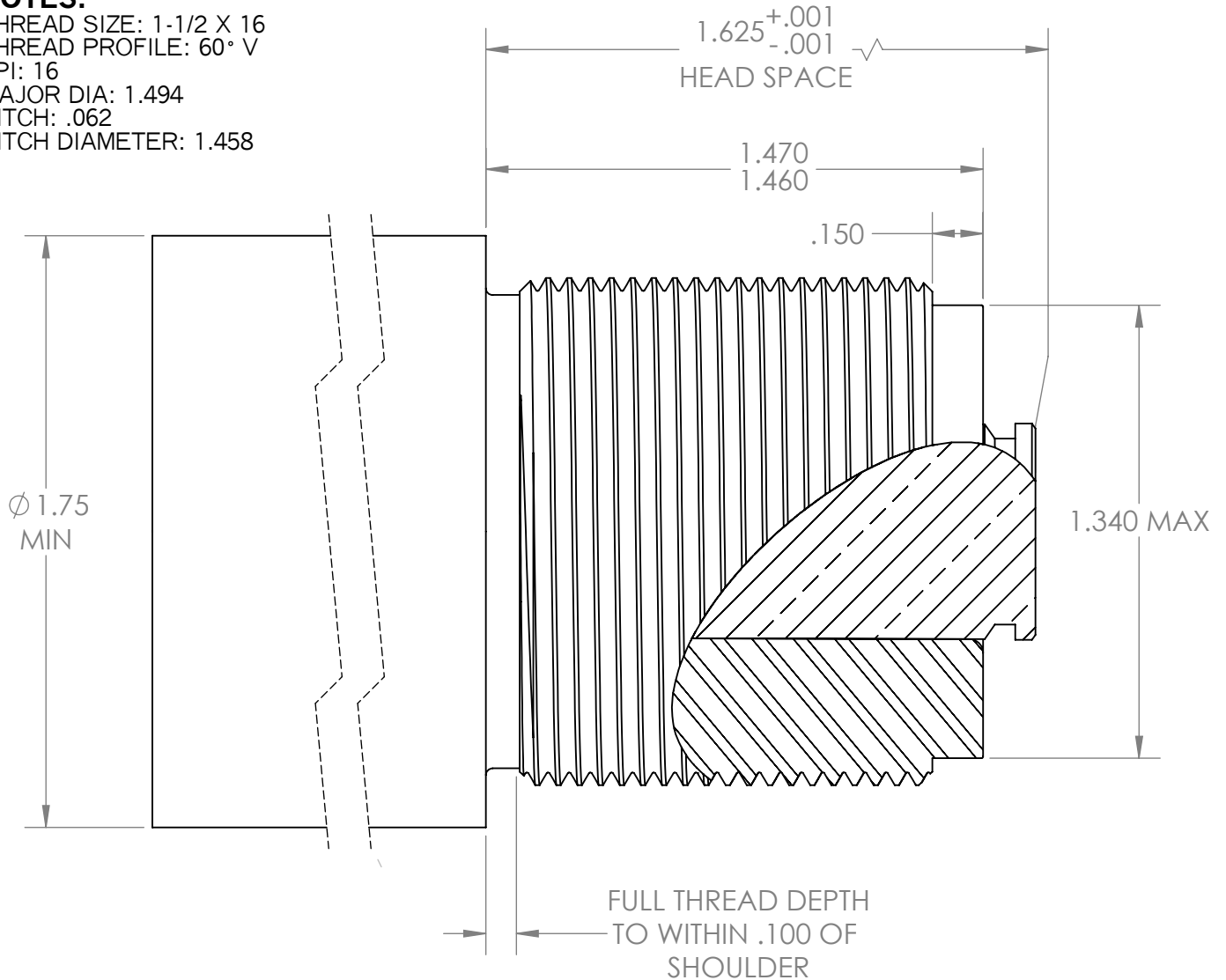


THIS DRAWING ONLY APPLIES TO THE ACTION MODEL.

EX with 408 CHEY-TAC Bolt

NOTES:

THREAD SIZE: 1-1/2 X 16
 THREAD PROFILE: 60° V
 TPI: 16
 MAJOR DIA: 1.494
 PITCH: .062
 PITCH DIAMETER: 1.458



WARNING:

1. There have been some bastard actions due to customer request or rework. It is your responsibility to verify the thread size in the action you are chambering for.
2. BAT Machine Inc. builds custom actions that may or may not match this drawing, and does not accept any liability from the use or misuse of this information. ALL actions should be measured individually.
3. The end user is solely responsible for the safe use of the product.

<p>PROPRIETARY AND CONFIDENTIAL THE INFORMATION CONTAINED IN THIS DRAWING IS THE SOLE PROPERTY OF BAT MACHINE CO. INC. ANY REPRODUCTION IN PART OR AS A WHOLE WITHOUT THE WRITTEN PERMISSION OF BAT MACHINE CO. INC. IS PROHIBITED.</p>	<p>DIMENSIONS ARE IN INCHES TOLERANCES UNLESS OTHERWISE SPECIFIED: ANGULAR: ± 1 DEGREE TWO PLACE DECIMAL ± .005 THREE PLACE DECIMAL ± .001</p>	NAME	DATE	<p><i>BAT Machine Co. Inc.</i></p>
		DRAWN	D. Thom	
	<p>MATERIAL</p> <p>FINISH</p> <p>DO NOT SCALE DRAWING</p>	CHECKED	B. Thom	12/23/2013
		ENG APPR.		
		MFG APPR.		
		Q.A.		
		COMMENTS:		
		SIZE	DWG. NO.	REV.
		A	tenon-1500CT	A
		SCALE: 2:1	WEIGHT:	SHEET 1 OF 1

**1-1/2 X 16
EX 408**